

Working with the Crash Detected Rule

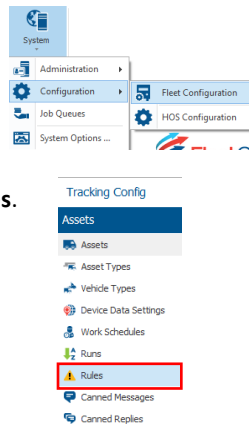
ABOUT THE CRASH DETECTED RULE

The Crash Detected Rule identifies when an asset has encountered a collision. The threshold at which the Fleet Complete application can detect a collision is 2 Gs of force. This is a current industry standard for vehicle airbags.

Important! This rule is currently not compatible with heavy duty vehicles.

ACCESSING THE CRASH DETECTED RULE

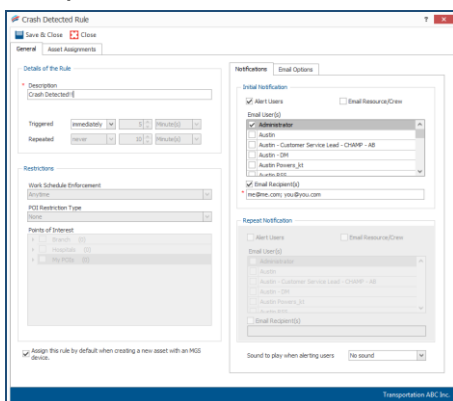
- From the main toolbar, select **System / Configuration / Fleet Configuration**.
- From the lower left menu, select **Assets**.
- From the upper left menu, select **Rules**.
- In the ribbon toolbar, click **Add**.
- From the list, select **Crash Detected**.



ADDING A CRASH DETECTED RULE

Adding a Crash Detected Rule is similar to setting up all the other rules in the Fleet Complete application.

- Complete the steps from “Accessing the Crash Detected Rule” as noted above.
- In the ribbon toolbar, click **Add**.
- Type a **Description**.



Note: the only *Trigger* option is **immediately**.

Note: setting **Restrictions** is not possible so as not to limit the recording of any potential collision

- Select the **Assign the Rule by Default** checkbox to automatically assign the rule when assets with devices are added to the application.
- On the **Notifications** sub-tab, define who needs to be notified and how.
- From the **Asset Assignment** tab, assign the assets to be associated with this rule by placing a checkmark next to their description.
- Click **Save & Close**.

WHERE DOES THE RULE'S DATA DISPLAY?

The data displays in the following areas in the application:

- Fleet Configuration: **Assets** module – **Rules** sub-section
- Fleet Configuration: **Assets** module – **Assets** sub-section
- Tracking screen: **Asset Activity** window – **Rule Violations** section
- Tracking screen: **Map Items** panel
- Tracking screen: **Trip Replay** window
- Reports: **Activity and Event** – the Reason/Activity column will contain “Crash Detected”
- Alerts Panel

Tracking Screen – Map Items Panel:

- The asset involved in the collision will be highlighted in **BLACK** as an Alarm.
- The Crash Detected icon will appear to the left of the asset icon.



Fleet Configuration – Assets module

- The Crash Detected icon will appear to the right of the asset icon.



Alerts Panel

- Pop-up notification window will appear and be stored in the Alerts panel

CLEARING THE CRASH DETECTED RULE

To clear the icon from the **Map Items** panel in the Tracking Screen:

- Access the asset right-click Menu
 - Right-click the Asset in the Map Items panel, or
 - Right-click the Asset icon directly in the Map area
- Select **Clear Crash**.

Note: clearing the Crash icon from the Tracking screen also clears it from the Fleet Configuration – Assets module.

